

# Evans Fire Protection District 2013 Annual Report





# Evans Fire Protection District 2013 Annual Report

## Board of Directors

### *A Message from the Board President*

As can be seen in this annual report, many opportunities have been presented to the Evans Fire Protection District. I am often amazed at what we have accomplished since the District's inception and what we continue to accomplish.

This Fire District formed on teamwork and continues to thrive with that teamwork. The City of Evans, the Board of Directors, and the Fire Chief could have never met our challenges without the most essential part of our team: our Members. It is our Members who identify the needs of the Department, prioritize those needs and do the real work to accomplish the tasks. Their commitment to having the best possible Fire Department is consistently evident. Our citizens are truly fortunate to have such quality personnel.



**Mary Achziger**  
President  
Seated on Board through 2016



**David James**  
Vice-President  
Seated on Board through 2018



**Tricia Watson**  
Treasurer  
Seated on Board through 2018



**Steve Bernardo**  
Secretary  
Seated on Board through 2016



**Marty Schanwolf**  
Director  
Seated on Board through 2018



*Values*

- Belonging*
- Dependability*
- Flexibility*
- Hard Work*
- Teamwork*
- Loyalty*
- Honesty,*
- Trust &*
- Integrity*

*Providing professional fire and emergency services with  
DEDICATION, COMPASSION, AND  
EXCELLENCE*



# Evans Fire Protection District 2013 Annual Report

## A Message from Chief Jones

Ladies and Gentlemen of Evans,

I'm pleased to present this summary on the activities of the Evans Fire Protection District for 2013. This report provides an overview of the services we provided to the residents, visitors, and businesses of Evans. The Evans Fire Department, in its various forms, has been serving the community since the first firefighting equipment was obtained in 1890. We are proud to continue this long tradition.

During the past year we met several major milestones for our firefighters and citizens. On January 1, 2013 we completed the final step in our transition from a city department to a special district when all employees and volunteers, fire apparatus, equipment and facilities transferred ownership. One of our main goals in forming a district was to upgrade our fleet. The first step towards this goal was realized with the arrival of our new Rosenbauer pumper in September. A second new pumper was authorized and is on order, with partial funding from a Colorado Department of Local Affairs Energy Impact grant.

We increased our on-duty staffing to include 9 part-time firefighters. Combined with 17 volunteers and 12 full-time firefighters this now allows us to staff two engine companies 24/7 almost 100% of the time.

A new automatic-aid response system with the LaSalle Fire District was implemented in August. Combined with our on-duty staffing and current mutual-aid with other fire agency partners we can now deploy 10-12 firefighters to most structure fires within 10 minutes. Evans firefighters continue to train and work on specialized response teams with neighboring districts. Through partnerships like these we are able to provide a wide range of services while reducing our overhead costs.

Another major milestone was entering into an ambulance service contract with Banner Health of Northern Colorado. Under this contract Banner provides a paramedic ambulance to medical emergencies within nine minutes 90% of the time. I'm pleased to report that in 2013 this performance was 95%.

In 2013 we responded to 1,773 calls for service through the Weld County Communications Center. Like most fire departments 70% of our calls for service involve rendering medical aid while only 3% are fires. In 2013 our average response time was 6 minutes, 06 seconds from the time of dispatch to the time of arrival on scene.

Of course, 2013 had its challenges as well. In August we said farewell to Doug Melby, who passed away on July 28. Doug served with Evans Fire in many capacities, beginning as a volunteer at the age of 16 and ending his career, 44 years later, as the Fire Marshall. September brought historic flooding to Evans. While this was one of the major events of my career in the fire service I am proud of the skills each of our firefighters displayed in protecting lives and property.

Evans firefighters strive to achieve our mission of serving our citizens with Dedication, Compassion, and Excellence every day. We continue to evaluate our performance measures to ensure we are providing the most effective and efficient services possible. Our policies and processes are updated as needed to reflect changes in our growing population and technology. As always, if you have questions or concerns about the District please contact me directly at 970-475-1117.

Respectfully,

A handwritten signature in black ink, appearing to read "Warren Jones".

Warren Jones  
Fire Chief/CEO





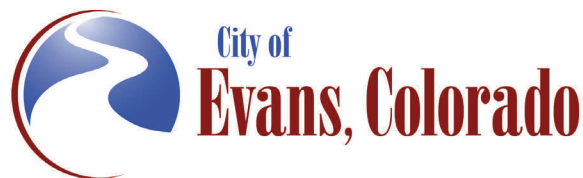
## Evans Fire Protection District 2013 Annual Report

### The District & Community

The District serves approximately 19,000 citizens in Evans, Colorado in an area of 10 square miles. Located in the southern portion of the Greeley-Evans metro area (combined population of 120,000) the District is completely contained within the municipal limits of the City of Evans. While Evans is primarily a suburban community, it is in close proximity to the outstanding recreational areas of northern Colorado and the Rocky Mountains. It is near the cities of Loveland and Fort Collins and is also within 50 miles of the Denver-Boulder metro area.

### District Services Summary

The District provides 24/7 fire and emergency services from one fully staffed fire station. Administrative offices are located in the Evans Community Complex, which also serves as the Evans City Hall. The District goal is to staff two engine companies with six on-duty firefighters 24/7. One of the on-duty engine companies cross-staffs a light EMS response vehicle. There are 12 full-time shift firefighters and company officers, 10 part-time and 20 volunteer firefighter positions authorized. The administrative staff includes the Fire Chief, a Training Officer, and an Administrative Assistant. An Assistant Chief position is authorized but is currently vacant due to budget limitations.



In addition to fire protection for buildings and the people who live and work in them, the District provides first response emergency medical services at the basic life support level. Paramedic ambulance service is provided under contract by Banner Health/North Colorado Medical Center Paramedics in Greeley. The District provides the normal range of rescue, wildland fire, fire prevention, and training services common to suburban fire departments. We participate with other fire agencies in special operations teams. Our training center includes a two-story live fire building as well as propane, vehicle fire, and positive pressure attack props. Currently, the District is transitioning to the Blue Card Hazard Zone Management System as are most fire agencies in Weld and Larimer Counties. Dispatch and communications services are provided by the Weld County Communications Center which serves all of the fire, law enforcement and ambulance agencies in the County.

The District participates in automatic-aid agreements with the Milliken FPD and LaSalle FPD. We also participate in the Weld County master mutual-aid system, which includes the City of Greeley Fire Department. Between on-duty staffing and automatic and mutual-aid, the District is generally able to deploy 10-12 firefighters to structure fires within 10 minutes. The current ISO rating is 4.

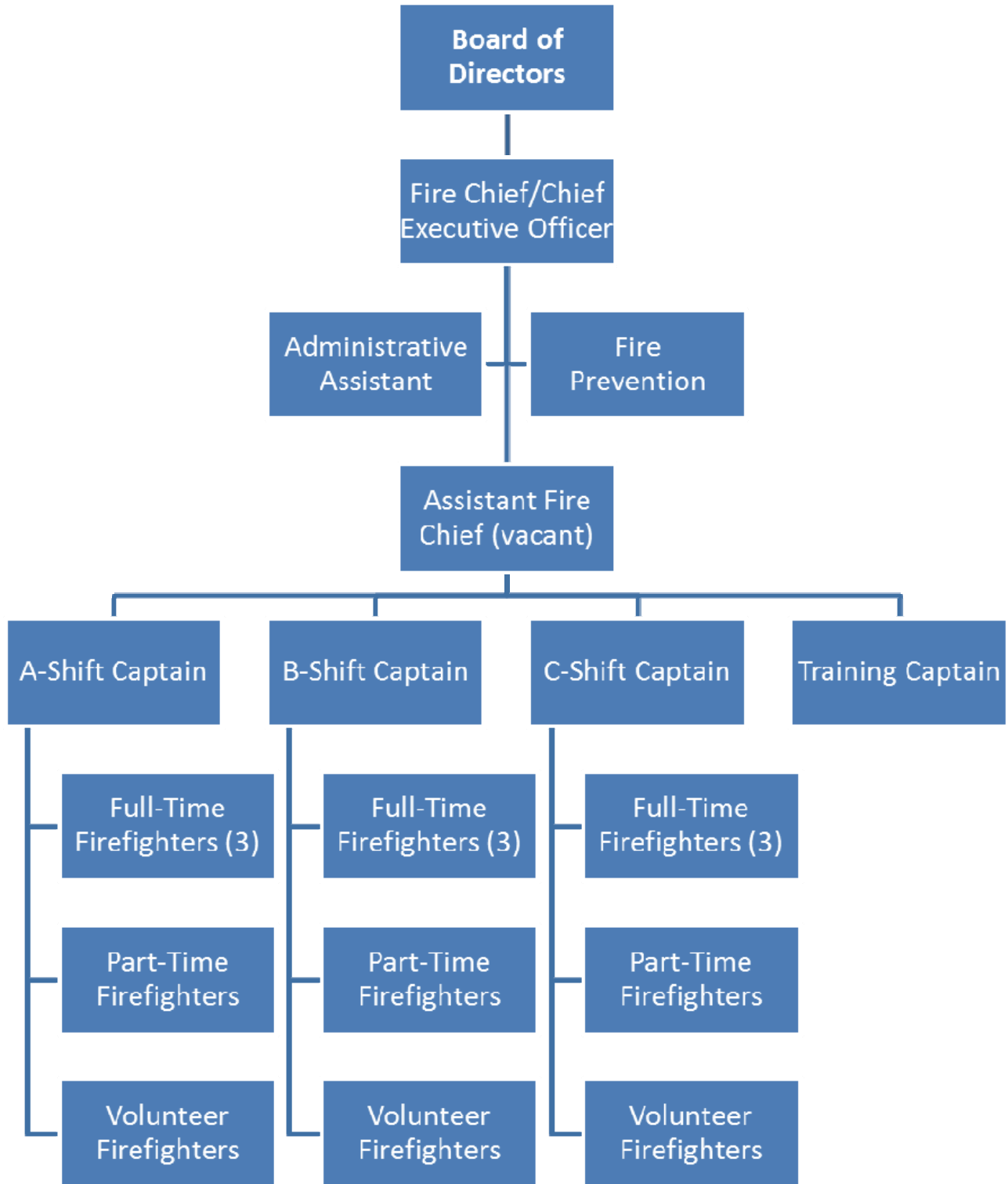
Our apparatus fleet includes a 2013 Rosenbauer 78' quint, 2000 ALF pumper and a 1995 E1 pumper. A 2014 Rosenbauer pumper is on order. There is also a medium rescue, light EMS response vehicle, brush truck and several staff vehicles.

The District has a balanced operating budget with \$2,201,518 in revenue and \$2,048,804. The largest contributor to District revenue is Property Tax. The second largest revenue source is a contribution from the City of Evans in accordance with the Service Plan and Inter-Governmental Agreement authorized as part of the formation of the District. In 2014, this contribution was \$448,918. Through the Inter-Governmental Agreement, the City of Evans staff provides the administrative services of human resources, finance, insurance and risk management.





Evans Fire Protection District  
Organizational Chart - 2014





## District Facilities



### *Station 1*

Evans Station 1 is located at 3918 Denver Street on the east side of Evans. This historic station was built in 1975, just to the south of the original fire station building (which was demolished in 1985). This station was built by volunteer firefighters with the support of Evans City Council, who purchased the materials. Currently, Station 1 is not staffed but serves as storage space for reserve equipment and contains an exercise facility for on-duty firefighters. The annual pancake breakfast is also held at Station 1.

### *Station 2*

Station 2, at 2100 37<sup>th</sup> Street on the west side of town, is our primary facility. Built in 1993, Station 2 was expanded to accommodate staffing increases in 2006. This fire station is staffed 24-hours a day, seven days a week by a combination of full-time, part-time, and volunteer firefighters.



### *Administrative Office*

The Fire Chief, Training Officer, and administrative offices are located in the Evans Community Complex at 1100 37th Street. This location allows Chief staff to work closely with City of Evans Human Resources and Finance staff, who provide services through an Inter-Governmental Agreement.

### *Training Facility*

Located at the City of Evans maintenance facilities at 1958 40th Street are the District training facilities. This facility includes a two-story live fire building, as well as propane, vehicle fire, and positive pressure attack props.





## 2013 Highlights

### *Rosenbauer Quint Pumper*

A primary reason for the formation of the District was the poor condition of the fire department's apparatus fleet. This was largely rectified in 2013 with the delivery of a 78' combination pumper/aerial ladder (quint) which replaced a 1990 ladder truck and 1986 pumper, and the ordering of a second new pumper, to be delivered in Fall 2014, replacing a 1995 pumper.



### *Increased on-duty staffing*

The on-duty staffing objective is to have Station 2 staffed with a total of six firefighters 24 hours a day, 7 days a week, 90% of the time. In 2013, this objective was met for approximately 40% of the time. This continues to be a critical performance objective as the staffing improvements related to the increase in property tax revenue authorized by the voters in 2011.

With the addition of 10 part-time firefighters we have seen increases in our on-duty staffing, providing for better coverage of the District and the needs of our citizens.

### *Banner ambulance contract*

In 2013 the District entered into a contract with Banner Health for paramedic ambulance services. This new contract continues the same service levels provided by the former Weld County Paramedic Services prior to the sale of the ambulance service by the County to Banner.







*City of Evans Safety Fair*

In August 2013 the District participated with the Evans Police Department in the first Community Safety Fair in cooperation with Sam's Club and other Evans-Greeley and Weld County public safety and health agencies. This event offered information and demonstrations for citizens of all ages on fire safety, disaster preparedness, school safety, safe driving, and mental health issues.



*Light medical response vehicle*

2013 was the first full year of the light medical response vehicle program. When five or more firefighters are on-duty an SUV medical response vehicle is used to respond to medical emergencies involving a single patient, rather than a full-size fire truck. The medical SUV responded to 732 of the 1,071 single patient medical emergencies. The advantages of this program are less wear and tear on our full-size fire trucks and a less obtrusive presence at medical emergencies.

*September 2013 Flood*

The major flooding in September of 2013 caused the permanent displacement of over 1,000 residents, the complete destruction of 208 mobile homes and commercial buildings, severe damage to 60 single family dwellings, destruction of the Evans regional park and recreation complex, major damage to a waste water treatment plant, damage to eight miles of City streets and breaches to a river berm system. District staff worked closely with the City of Evans and the Southwest Incident Management Team to ensure the safety of citizens and begin recovery efforts.





### **Automatic Aid with LaSalle Fire Protection District**

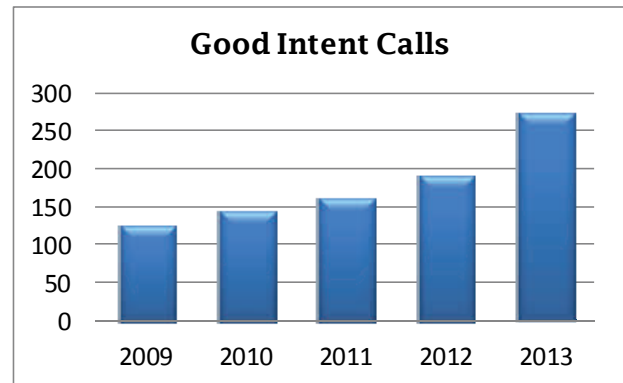
The District entered into a revised automatic-aid agreement with neighboring LaSalle Fire Protection District in November 2013. Both Districts felt the need to review the current automatic-aid agreement to revise the boundaries of the aid area and the types of calls responded to under the agreement. Staff from both Districts felt that the automatic-aid area would best be served by response to structure fires only. The benefit of this agreement is an automatic response of a second or third engine to all structure fires. This structure fire automatic-aid agreement is in addition to the contractual services provided to LaSalle for all emergency calls in the LaSalle areas north of the South Platte River. Evans and LaSalle firefighters continue to train together to ensure a cohesive response to all fires.



### **Emergency Response**

In 2013 Evans Fire District responded to 1,773 calls for service through the Weld County Regional Communications Center. This was an increase of 19% more calls than 2012. This is consistent with the experience of other fire agencies in Weld County. The majority of all calls for service were related to medical emergencies.

The largest increase within a single category was for rescue. However, these include rescues related to the 2013 flood which was an unprecedented event. The same is true for hazardous conditions. The largest year-to-year increase was for good intent calls. These are incidents reported by a citizen who believes a hazard or emergency exists but upon investigation no hazard or emergency is found. These include controlled burns, recreational fires, smoke investigations, and steam mistaken for smoke. They also include responses that are canceled after dispatch due to additional information confirming that an emergency doesn't exist. As shown in the five-year comparison these types of calls are increasing steadily.



INCIDENT TYPE	2012		2013		% CHANGE
	# of INCIDENTS	% of TOTAL	# of INCIDENTS	% of TOTAL	
EMS	1008	68.15%	1198	67.57%	19%
False Call	80	5.40%	106	5.98%	33%
Fire	68	4.59%	53	2.99%	-22%
Good Intent Call	192	12.82%	276	15.57%	44%
Hazardous Condition	29	1.96%	54	3.05%	86%
Other Incident Type	6	0.40%	8	0.45%	33%
Rescue	5	0.34%	12	0.68%	140%
Service Call	99	6.68%	66	3.72%	-33%
<b>Total</b>	<b>1487</b>		<b>1773</b>		<b>19%</b>



# Evans Fire Protection District 2013 Annual Report

## Response Time

EFPD strives to meet an average response time objective of 6 minutes from Dispatch to Arrival on Scene. In 2013, we met this goal on 61.6% of emergency responses. We will watch this closely throughout 2014 to see if there are ways of reducing response time. However, given our number of calls and single location 6 minutes at 90% may not be attainable. Interestingly, our customer surveys indicate a 98% satisfaction level with our response time so while our response time might not meet what is expected in our professional standards, it may be acceptable to our citizens.

	2012	2013
Average Emergency Response time	6:00 minutes	6:06 minutes
Goal	6 minutes	6 minutes
Percent of responses that met goal	60%	61.6%

## Fires

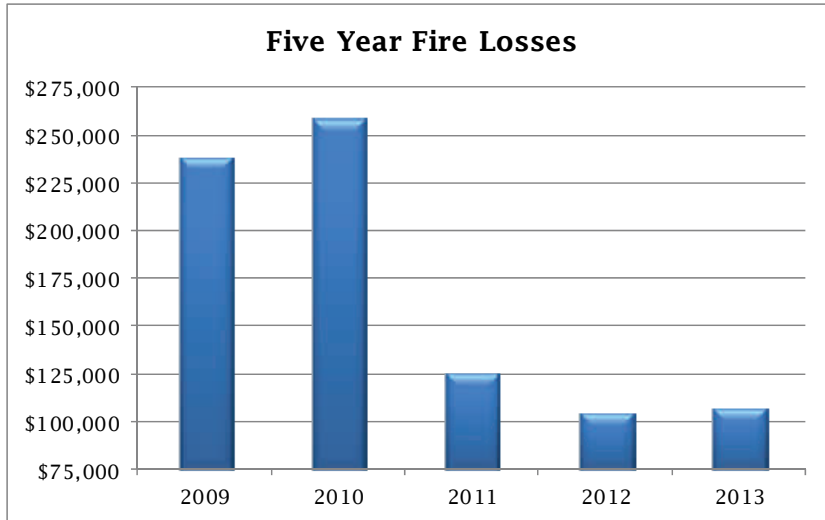
During 2013 a total of 53 fires were recorded, with a majority of those being Building Fires and Brush/Grass Fires. This is a 22% decrease in total fires from the previous year.

	2012		2013	
	# of FIRE INCIDENTS	% of TOTAL FIRES	# of FIRE INCIDENTS	% of TOTAL FIRES
100 - Fire, other	1	1%		
111 - Building fire	13	19%	13	25%
112 - Fires in structure other than in a building	2	3%		
113 - Cooking fire, confined to container	2	3%	4	8%
114 - Chimney or flue fire, confined to chimney or flue	1	1%		
117 - Commercial Compactor fire, confined to rubbish			1	2%
118 - Trash or rubbish fire, contained	5	7%	4	8%
120 - Fire in mobile prop. used as a fixed structure				
121 - Fire in mobile home used as fixed residence	1	1%	1	2%
122 - Fire in motor home, camper, recreational vehicle			1	2%
123 - Fire in portable building, fixed location				
130 - Mobile property (vehicle) fire, other				
131 - Passenger vehicle fire	2	3%	3	6%
132 - Road freight or transport vehicle fire	3	4%		
140 - Natural vegetation fire, other	7	10%		
141 - Forest, woods or wildland fire	5	7%	4	8%
142 - Brush or brush-and-grass mixture fire	5	7%	8	15%
143 - Grass fire	5	7%	3	6%
150 - Outside rubbish fire, other	3	4%		
151 - Outside rubbish, trash or waste fire	8	12%	6	11%
154 - Dumpster or other outside trash receptacle fire			2	4%
160 - Special outside fire, other	1	1%	1	2%
161 - Outside storage fire	1	1%		
162 - Outside equipment fire	1	1%	1	2%
164 - Outside mailbox fire				
171 - Cultivated grain or crop fire	2	3%		
173 - Cultivated trees or nursery stock fire			1	2%
<b>TOTAL FIRE INCIDENTS</b>	<b>68</b>		<b>53</b>	



### Property loss from Fires

The loss of property due to fire was estimated to be \$106,900 in 2013. This includes direct damage to structures and contents as well as vehicles and equipment. This continues a short-term trend of relatively low fire loss. The five-year average however is \$167,458. It is important to recognize that fire loss can be greatly affected by a single fire. For example, it has been several years since Evans has experienced a serious fire in a commercial building or the total loss of a residential structure.



### Emergency Medical Services

The majority of EFPD calls for service are for medical services—EMS calls account for 70% of our total calls. In the spring of 2013 we implemented the use of a modified SUV to respond to all single-patient medical calls. This change in deployment has allowed for a more efficient response to these calls. EFPD responds with Banner Health Ambulance Services to all medical emergencies in accordance with Weld County EMS dispatch procedures common across the entire county. There are small differences in total numbers due to medical emergencies that may be included in other call types. The largest increase in calls were in medical assists, where a Banner ambulance crew requires firefighter assistance.

MEDICAL INCIDENTS	2012		2013		% CHANGE
	# of INCIDENTS	% of TOTAL	# of INCIDENTS	% of TOTAL	
300 - Rescue, EMS incident, other	4	0.27%			
311 - Medical assist, assist EMS crew	532	35.76%	646	53.43%	21.43%
320 - Emergency medical service, other	10	0.67%	1	0.08%	-90%
321 - EMS call, excluding vehicle accident	363	24.49%	425	35.15%	17%
322 - Motor vehicle accident with injuries	42	2.83%	41	3.39%	-2%
323 - Motor vehicle/pedestrian accident	4	0.27%	9	0.74%	125%
324 - Motor vehicle accident with no injuries.	53	3.51%	72	5.96%	36%
350 - Extrication, rescue, other	1	0.07%	2	0.17%	100%
353 - Removal of victim(s) from stalled elevator	1	0.07%			
363 - Swift water rescue			9	0.74%	
381 - Rescue or EMS standby	3	0.20%	4	0.33%	33%
<b>TOTAL MEDICAL INCIDENTS</b>	<b>1013</b>		<b>1209</b>		<b>19%</b>



## Training

Evans Fire District strives to continually improve our service to citizens. To ensure that all firefighters are focused and prepared for the demands of the job each shift regularly trains to maintain their skills for all the challenges they face on a daily basis.



The District has one full-time training captain. This officer develops training programs, works with shift captains in delivering training, and maintains the District's training facility. The training captain coordinates the activities of many other District members who develop and deliver training. He also services as the District's volunteer coordinator.

The District operates a training facility at the Evans Municipal Operations Center. Here firefighters are able to train in structural firefighting on a two-story burn building and a positive-pressure attack building. Props are also available for training on vehicle and propane fires.

In 2013, each Captain completed the Blue Card Command Certification Program. This training system standardizes local incident operations across the organization allowing all officers and firefighters to operate consistently when on-scene of an incident. The program uses a combination of online and in-class simulation training which results in an Incident Commander solution that addresses local Hazard Zone operations.

In addition to our training facility, in 2013 firefighters made use of the old Meakins Center building in east Evans. This building was later demolished to make room for the new Riverside Library and Cultural Center. Firefighters were able to train on a variety of skills including positive pressure attack, vent enter search, high rise firefighting, search & rescue, and hose deployment. These trainings also offered an opportunity to train with firefighters from Greeley Fire Department and LaSalle Fire District.



Average Training Hours	2012	2013
per Volunteer Firefighter	75	61
per Part-Time Firefighter	138	112
per Full-Time Firefighter	148	147
<b>Total Training Hours for all Firefighters</b>	<b>4,698</b>	<b>3,500</b>

## Public Education

Evans firefighters remain actively involved in the community by participating in events that raise public awareness of dangers and safety issues.

During 2013 Evans Firefighters attended numerous public events including the safety fair, Station 2 tours, fire extinguisher demos, school functions (smoke house, talks, & presentations) and business fire drills. EFPD also co-sponsored a citizens American Heart Association CPR class and installation of carbon monoxide detectors. Evans Firefighters assisted Evans Police with prescription drug-take back events, served at the 9Health Fair and crews inspected and safely installed car seats.





## Glossary of Major Incident Types :

**EMS (Emergency Medical Services)** - Incidents where people suffer injuries and sudden illness that require pre-hospital medical care and sometimes ambulance transportation to a medical facility. Sub-categories include EMS incidents where EFPD arrives before a Banner ambulance (EMS call excluding vehicle accident with injuries) and where EFPD arrives after a Banner ambulance (medical assist, assist EMS crew). Other EMS sub-categories include motor vehicle accidents and rescues with injury.

**False Alarm/False Call** - Incidents where a fire or hazard is reported erroneously either by a person or an automatic alarm system. Included are malicious and mischievous calls, bomb & biohazard scares, and fire alarm system malfunctions.

**Fire** - Incidents where unintentional smoke or fire is present including fires that are out on arrival, fires extinguished by firefighters, fires extinguished by others, and fires extinguished by automatic fire suppression systems.

**Good Intent** - Incidents where a caller believes a hazard or emergency exists but upon EFPD investigation no hazard or emergency is found. Includes controlled burns, recreational fires, smoke investigations, and steam mistaken for smoke. Also includes responses that are canceled while EFPD is en route due to additional information confirming that an emergency doesn't exist.

**Hazardous Condition** - Incidents where a non-fire emergency condition is reported. Included are gas leaks, hazardous materials releases, fuel spills, and downed power lines.

**Service Calls** - Incidents where EFPD provides non-emergency assistance to citizens. Included are water leaks, assisting police, and assisting citizens with special needs who cannot gain assistance in a timely manner in other ways.

**Response Time** - The time from when EFPD is notified of an emergency by the Weld County Communications Center and the arrival of the first EFPD personnel on scene.

