



EVANS FIRE PROTECTION DISTRICT 2016 ANNUAL REPORT



- DISTRICT OVERVIEW
- BOARD OF DIRECTORS
- CHIEF PRISTERA
- ORGANIZATIONAL CHART
- DISTRICT FACILITIES
- 2016 HIGHLIGHTS
- FINANCIAL SUMMARY
- INCIDENT STATISTICS
- EMERGENCY RESPONSES
- MEDICAL RESPONSES
- TRAINING
- MUTUAL & AUTOMATIC AID

DISTRICT OVERVIEW

- EVANS FIRE PROTECTION DISTRICT SERVES APPROXIMATELY 20,000 CITIZENS IN EVANS, COLORADO. THE DISTRICT IS COMPLETELY CONTAINED WITHIN THE MUNICIPAL LIMITS OF THE CITY OF EVANS, COVERING AN AREA OF APPROXIMATELY 10 SQUARE MILES.
- THE DISTRICT PROVIDES 24/7 FIRE AND EMERGENCY SERVICES FROM ONE FULLY STAFFED FIRE STATION ON 37TH STREET. ADMINISTRATIVE OFFICES ARE LOCATED IN THE EVANS COMMUNITY COMPLEX, WHICH ALSO SERVES AS THE EVANS CITY HALL. IN 2017, STATION 2 WILL BE RENOVATED TO INCREASE LIVING AND OFFICE SPACE FOR FIREFIGHTERS AND MAKE SPACE AVAILABLE FOR RELOCATING THE ADMINISTRATION OFFICE TO THE STATION.
- THE DISTRICT PARTICIPATES IN AUTOMATIC-AID AGREEMENTS WITH FRONT RANGE FIRE RESCUE, PLATTE VALLEY FIRE PROTECTION DISTRICT, AND LASALLE FIRE PROTECTION DISTRICT. WE ALSO PARTICIPATE IN THE WELD COUNTY MASTER MUTUAL-AID SYSTEM, WHICH INCLUDES THE CITY OF GREELEY FIRE DEPARTMENT. BETWEEN ON-DUTY STAFFING AND AUTOMATIC AND MUTUAL-AID, THE DISTRICT IS GENERALLY ABLE TO DEPLOY 10-12 FIREFIGHTERS TO STRUCTURE FIRES WITHIN 10 MINUTES.



- THE DISTRICT PROVIDES THE NORMAL RANGE OF RESCUE, WILDLAND FIRE, FIRE PREVENTION, AND TRAINING SERVICES COMMON TO SUBURBAN FIRE DEPARTMENTS. IN ADDITION, WE WORK WITH OTHER AGENCIES IN SEVERAL AREAS:
 - SPECIAL OPERATIONS TEAMS SUCH AS DIVE/ICE/SWIFTWATER RESCUE AND HAZARDOUS MATERIALS RESPONSE.
 - DISPATCH AND COMMUNICATIONS SERVICES ARE PROVIDED BY THE WELD COUNTY COMMUNICATIONS CENTER WHICH SERVES ALL OF THE FIRE, LAW ENFORCEMENT, AND AMBULANCE AGENCIES IN THE COUNTY.
 - PARAMEDIC AMBULANCE SERVICE IS PROVIDED UNDER CONTRACT BY BANNER HEALTH/NORTH COLORADO MEDICAL CENTER PARAMEDICS IN GREELEY.

BOARD OF DIRECTORS

THE BOARD IS THE GENERAL GOVERNING BODY OF THE DISTRICT. ALL DIRECTORS MUST BE ELIGIBLE ELECTORS OF THE DISTRICT AND ARE ELECTED TO SERVE A FOUR-YEAR TERM. DIRECTORS ARE TASKED WITH OVERSEEING ALL ASPECTS OF THE DISTRICT AND MANAGING THE BUSINESS OF THE DISTRICT IN PUBLIC MEETINGS. THE BOARD APPROVES MAJOR PURCHASES AND GOVERNS INTER-GOVERNMENTAL AGREEMENTS AND CONTRACTS. THE FIRE CHIEF REPORTS DIRECTLY TO THE BOARD OF DIRECTORS.

A MESSAGE FROM THE PRESIDENT OF THE BOARD

I AM PLEASED TO PRESENT THIS ANNUAL REPORT THAT ENCOMPASSES THE RESULTS OF ANOTHER YEAR OF DEDICATION, COMPASSION, AND EXCELLENCE ON THE PART OF OUR FIREFIGHTERS AND STAFF. THESE ARE VALUES THAT WE HAVE FOCUSED ON SINCE THE FORMATION OF THE DISTRICT AND HAVE BEEN AN IMPORTANT GUIDE. I'M HONORED TO BE PART OF THIS ADMIRABLE GROUP THAT IS DEDICATED TO THE MISSION OF PROVIDING EXCELLENT SERVICE TO OUR CITIZENS WHILE ALSO ENSURING RESPONSIBLE AND EFFICIENT STEWARDSHIP OF TAXPAYER RESOURCES. DURING THE PAST YEAR, FIREFIGHTERS HAVE APPLIED FOR, AND BEEN AWARDED, GRANTS TO IMPROVE OPERATIONS AND UPGRADE EQUIPMENT. NEW MUTUAL AND AUTOMATIC AID AGREEMENTS WERE REACHED WITH NEIGHBORING DISTRICTS ALLOWING FOR BETTER RESPONSE TIMES AND MORE FIREFIGHTERS ON-SCENE AT STRUCTURE FIRES. TO MEET THE INCREASING DEMAND FOR OUR SERVICES BIG THINGS WILL BE HAPPENING IN THE COMING YEAR AND I AM PRIVILEGED TO CONTINUE GUIDING THIS OUTSTANDING ORGANIZATION.

Mary Achziger



Mary Achziger
President



David James
Vice-President



Tricia Watson
Treasurer



Steve Bernardo
Secretary



Marty Schanwolf
Director

CHIEF'S MESSAGE

Greetings,

The 2016 Annual Report for the District follows - it contains a summary of the District's activities and performance for the year, but here are some highlights to consider while reviewing the rest of the document.

In 2015, we determined the need to replace the aging brush truck and medical response vehicle. The best option was a custom designed multi-purpose apparatus. This new utility engine, ordered in late 2015, was delivered in June. The old brush truck was sold to a smaller, rural department in Missouri. The old medical response vehicle was re-outfitted to replace the aging command vehicle. Once again, a DOLA Energy Impact Assistance Fund grant was secured to offset the cost of the new utility engine.

During 2016 we were quite busy administratively. Staff conducted an evaluation of our health insurance benefits, wellness program and overall non-monetary compensation package. We completed the first major task in conforming the District's boundaries upon receipt of an inclusion petition from the ARB property that had been annexed into the City of Evans.

As we consider 2017, our year will be busy with undertaking a major renovation of Station 2. This project will be completed with the assistance of a DOLA Energy Impact Assistance Fund grant and funding from the new agreement with the City of Evans regarding transfer of fire impact fees collected by the City.

I would be remiss in not taking a moment to thank the extraordinary men and women of our District, who work tirelessly to provide professional, compassionate emergency services that are respectful of the taxpayer's money.

In closing, please take a few moments to review the rest of this report, and if you have any questions, or suggestions, do not hesitate to contact me directly.

Respectfully,



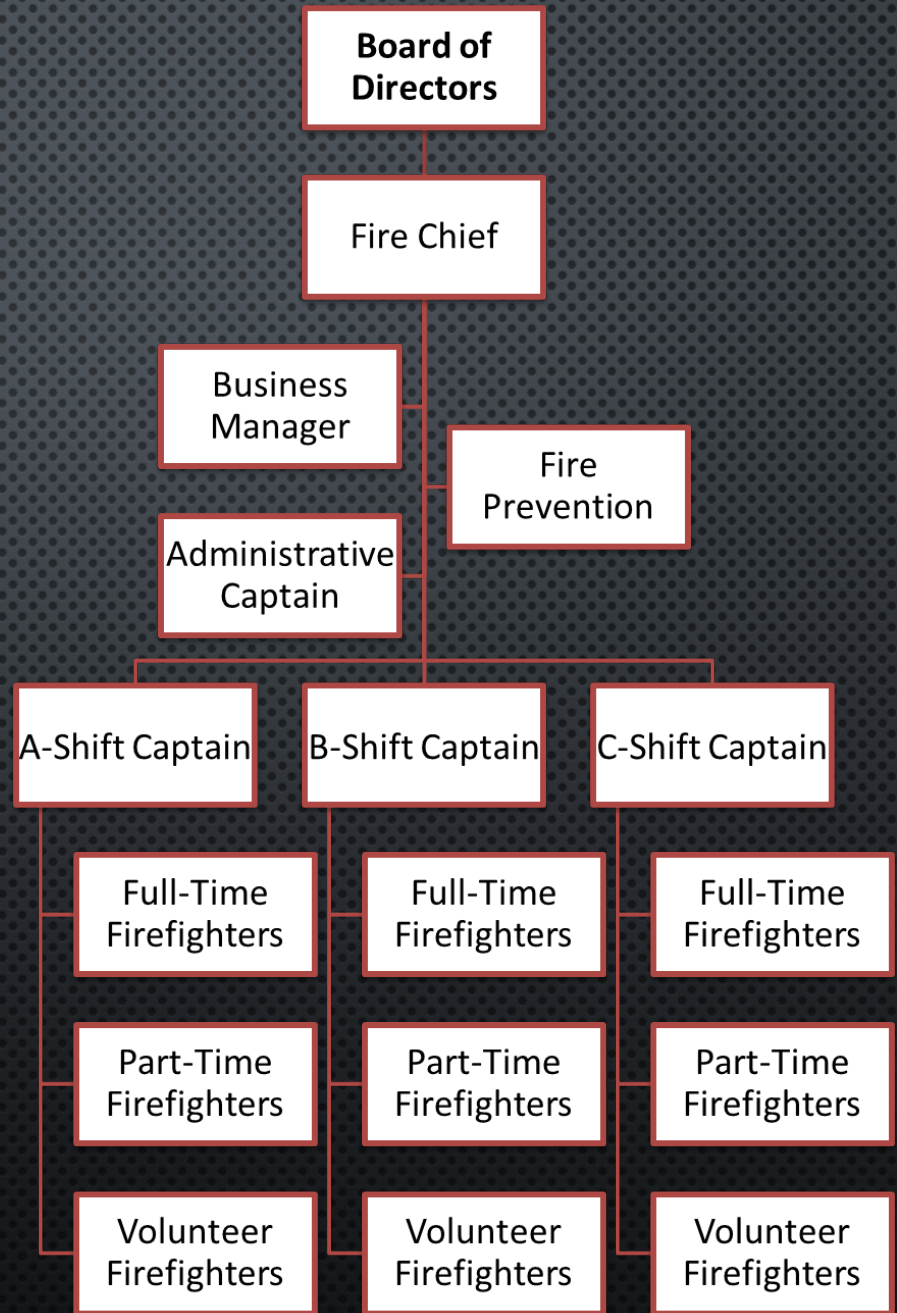
Ron Pristera MPA, CFO



ORGANIZATIONAL CHART



Staffing is comprised of 11 full-time firefighters, 3 company officers, 17 part-time firefighters, and 2 volunteer firefighters. The administrative staff includes the Fire Chief, Administrative Captain, and Business Manager.



DISTRICT FACILITIES



STATION 2 IS OUR PRIMARY FACILITY. BUILT IN 1993, STATION 2 WAS EXPANDED TO ACCOMMODATE STAFFING INCREASES IN 2006. TWO ENGINE COMPANIES STAFF STATION 2 24-HOURS A DAY, SEVEN DAYS A WEEK. STAFFING IS COMPRISED OF A COMBINATION OF 11 FULL-TIME FIREFIGHTERS, 3 COMPANY OFFICERS, 17 PART-TIME FIREFIGHTERS, AND 2 VOLUNTEER FIREFIGHTERS. THIS BUILDING WILL BE RENOVATED AND EXPANDED IN 2017.

HISTORIC **STATION 1** WAS BUILT BY VOLUNTEER FIREFIGHTERS IN 1975 WITH THE SUPPORT OF EVANS CITY COUNCIL, WHO PURCHASED THE MATERIALS. CURRENTLY, STATION 1 IS NOT STAFFED BUT SERVES AS STORAGE SPACE FOR RESERVE EQUIPMENT.



DISTRICT ADMINISTRATION IS CURRENTLY LOCATED IN THE EVANS COMMUNITY COMPLEX. UPON COMPLETION OF THE RENOVATION PROJECT THE ADMINISTRATION OFFICES WILL BE RELOCATED TO THE STATION, BRINGING ALL STAFF INTO ONE BUILDING. THE ADMINISTRATIVE STAFF INCLUDES THE FIRE CHIEF, ADMINISTRATIVE CAPTAIN, AND BUSINESS MANAGER.

DISTRICT TRAINING GROUNDS ARE LOCATED AT THE CITY OF EVANS MAINTENANCE FACILITIES. HERE OUR CREWS CAN SIMULATE A VARIETY OF SITUATIONS USING A TWO-STORY LIVE FIRE BUILDING, PROPANE TANKS, A VEHICLE FIRE, AND POSITIVE PRESSURE ATTACK PROPS. A PUMP PIT AND DIVE TANK ADDED IN LATE 2015 ALLOW FOR EVEN MORE TRAINING OPTIONS.



HIGHLIGHTS

- OUR NEWEST APPARATUS, A **MULTI-PURPOSE UTILITY VEHICLE**, WAS DELIVERED IN JUNE 2016. DESIGNED FOR WILDLAND FIRE AND LIGHT MEDICAL RESPONSES, THIS APPARATUS WAS PARTIALLY FUNDED BY A GRANT FROM **COLORADO DEPARTMENT OF LOCAL AFFAIRS ENERGY IMPACT ASSISTANCE FUND**.
- A **SPECIAL ELECTION** WAS HELD IN FEBRUARY TO REMOVE TERM LIMITS FOR DIRECTORS ON THE DISTRICT BOARD. A **REGULAR ELECTION** WAS HELD IN MAY FOR TWO DIRECTOR'S SEATS. DIRECTORS ACHZIGER AND BERNARDO BOTH RAN UNOPPOSED AND WILL REMAIN ON THE BOARD UNTIL 2020.
- FOR THE SECOND CONSECUTIVE YEAR, WE **ADDED ONE FULL-TIME FIREFIGHTER POSITION**, BRINGING THE NUMBER OF LINE FIREFIGHTERS TO 14. TWO SHIFTS HAVE FIVE FULL-TIME FIREFIGHTERS, THE THIRD SHIFT HAS FOUR FULL-TIME FIREFIGHTERS.
- **MODIFIED THE STEP BASED PAY SYSTEM** TO INCORPORATE A PERFORMANCE BASED BONUS FOR FIREFIGHTERS WHO ARE AT THE TOP OF THE PAY SYSTEM.
- DEVELOPED AND EXECUTED TWO **INTERGOVERNMENTAL AGREEMENTS WITH THE CITY OF EVANS**. THE FIRST AGREEMENT TRANSFERRED PREVIOUSLY COLLECTED FIRE IMPACT FEES TO THE DISTRICT, AND THE SECOND CREATES A PROCESS FOR THE CITY TO COLLECT FIRE IMPACT FEES, THEN TRANSFER THEM TO THE DISTRICT.
- OBTAINED AN **ADDITIONAL PARCEL OF LAND** AT STATION #2 TO SUPPORT THE STATION RENOVATION.





- COMPLETED TWO **AGREEMENT MODIFICATIONS WITH THE LASALLE FIRE DISTRICT**. THE FIRST CLARIFIED THE PROCESS BY WHICH WE BILL LASALLE FIRE DISTRICT FOR OUR RESPONSE INTO THAT DISTRICT IN AREAS MORE EASILY ACCESSED BY EVANS FIRE. THE SECOND AGREEMENT BROUGHT THE ARB NIOBRARA CONNECTOR LLC PROPERTY INTO THE EVANS FIRE DISTRICT. THIS WAS NECESSARY TO CONFORM TO GUIDELINES SET OUT IN AN AGREEMENT WITH THE CITY OF EVANS IN WHICH ALL PROPERTY ANNEXED INTO THE CITY OF EVANS MUST ALSO BE ANNEXED INTO THE EVANS FIRE DISTRICT.
- SECURED A **DIVISION OF FIRE PREVENTION & CONTROL GRANT** TO FUND ONE QUARTER OF THE SELF-CONTAINED BREATHING APPARATUS (SCBA) REPLACEMENT PROJECT. ALL DISTRICT SCBA HAS BEEN REPLACED.
- COMPLETED AN **UNDERGROUND PUMP TRAINING PIT** AT THE TRAINING FACILITY TO MINIMIZE WATER CONSUMPTION DURING FIREFIGHTING TRAINING.
- INSPECTED AND FLOW-TESTED APPROXIMATELY **250 FIRE HYDRANTS** WITHIN THE DISTRICT.
- A NEW **EMERGENCY GENERATOR**, CAPABLE OF POWERING THE ENTIRE STATION, WAS PLACED AT STATION 2 IN CONJUNCTION WITH A PLANNING GRANT OBTAINED BY THE CITY OF EVANS.

FINANCIAL SUMMARY

THE LARGEST CONTRIBUTOR TO DISTRICT REVENUE IS PROPERTY TAX, SPECIFICALLY RESIDENTIAL PROPERTY TAXES WHICH HAVE BEEN STEADILY INCREASING. IN 2016, WE RECEIVED SLIGHTLY MORE IN PROPERTY TAXES AND SPECIFIC OWNERSHIP TAXES THAN ORIGINALLY BUDGETED. THE INCREASE IN PERSONNEL EXPENSE WAS DUE TO ADJUSTMENTS TO THE PAY SCALE, THE ADDITION OF ONE FULL-TIME FIREFIGHTER POSITION, AND THE DISTRICT BEGAN PAYING FOR FT FIREFIGHTER'S D&D COVERAGE.

	2016	2015
REVENUES:		
Property taxes	1,835,962	1,548,494
Specific ownership taxes	115,659	106,762
Intergovernmental Agreements	479,477	467,009
Grants	132,920	3,126
Other/Sale of Surplus Items	19,057	86,043
TOTAL REVENUES	2,583,075	2,211,434
EXPENSES:		
Personnel	1,597,747	1,454,972
Administration	222,120	232,177
Operations	98,158	99,135
Repairs and Maintenance	77,236	76,028
Long-Term Debt	83,800	85,408
TOTAL EXPENSES	2,079,061	1,947,721



INCIDENT STATISTICS

2016 INCIDENT COUNT

INCIDENT TYPE	# INCIDENTS
EMS	1,441
FIRE	759
TOTAL	2,200

MUTUAL AID

Aid Type	Total
Aid Given	45
Aid Received	78

OVERLAPPING CALLS

# OVERLAPPING	% OVERLAPPING
440	20%

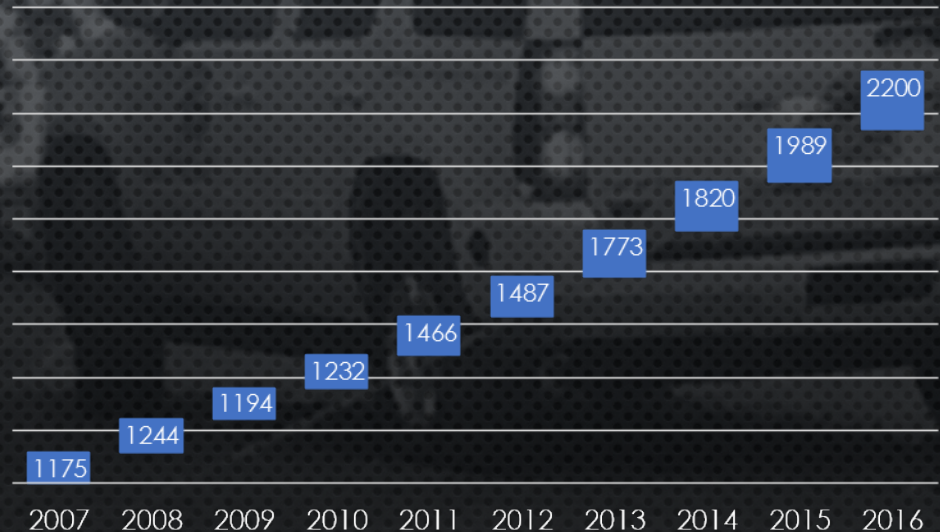
THE DISTRICT EXPERIENCED AN 11% CALL VOLUME INCREASE OVER 2015. SINCE 2007 THE CALL VOLUME HAS ALMOST DOUBLED, WITH AN 87% INCREASE IN CALLS OVER 10 YEARS.

WITH THE ADDITION OF THE PART-TIME FIREFIGHTER PROGRAM IN RECENT YEARS WE HAVE BEEN ABLE TO STAFF TWO COMPANIES (5 OR MORE FIREFIGHTERS ON DUTY) FOR ABOUT 2/3 OF THE SHIFTS.

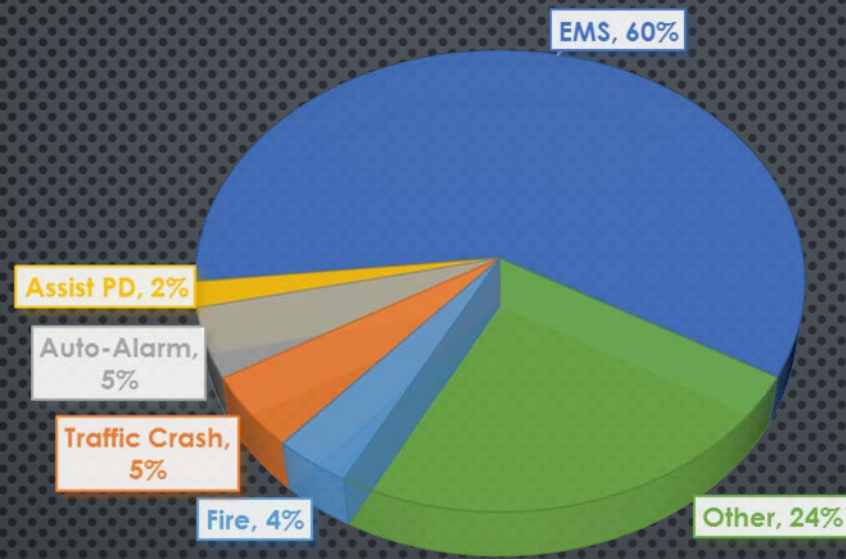
THE BUSIEST DAY OF THE YEAR WAS JUNE 28 WITH 16 CALLS DURING THAT 24 HOUR PERIOD. THREE OF THOSE CALLS WERE ANSWERED BY C-SHIFT BEFORE 07:00. A-SHIFT ANSWERED 13 CALLS FROM 07:00 TO MIDNIGHT. HOWEVER, OVER THE COURSE OF THE YEAR C-SHIFT WAS THE BUSIEST WITH 756 INCIDENTS (34% OF THE TOTAL).

BOTH A-SHIFT AND C-SHIFT HAD THE BUSIEST 48 HOUR SETS WITH 22 CALLS EACH ON SEPTEMBER 6-7 AND DECEMBER 7-8. B-SHIFT'S BUSIEST 48 HOUR SET WAS OCTOBER 22-23 WITH 18 CALLS.

THE AVERAGE FOR THE YEAR WAS 12 CALLS PER 48 HOUR SET.



EMERGENCY RESPONSES



Other incident types

Animal problem	1	Lightning strike (no fire)	1
Animal rescue	5	Lock-in (if lock out , use 511)	3
Arcing, shorted electrical equipment	4	Lock-out	6
Assist invalid	19	No incident found on arrival at dispatch address	86
Attempt to burn	2	Oil or other combustible liquid spill	3
Authorized controlled burning	5	Overheated motor	3
Building or structure weakened or collapsed	1	Person in distress, other	12
Carbon monoxide incident	10	Power line down	8
Chemical hazard (no spill or leak)	1	Public service	6
Chemical spill or leak	1	Public service assistance, other	2
Cover assignment, standby, moveup	1	Rescue or EMS standby	2
Defective elevator, no occupants	1	Search for person in water	1
Dispatched & cancelled en route	281	Smoke from barbecue, tar kettle	2
Electrical wiring/equipment problem, other	4	Smoke or odor removal	7
EMS call, party transported by non-fire agency	2	Smoke scare, odor of smoke	12
Excessive heat, scorch burns with no ignition	1	Steam, vapor, fog or dust thought to be smoke	2
Extrication of victim(s) from building/structure	1	Swift water rescue	1
Extrication of victim(s) from machinery	1	Unauthorized burning	14
Extrication of victim(s) from vehicle	1	Vehicle accident, general cleanup	3
Gas leak (natural gas or LPG)	4	Water evacuation	1
Gasoline or other flammable liquid spill	4	Water or steam leak	7
Good intent call, other	3	Wind storm, tornado/hurricane assessment	3
HazMat release investigation w/no HazMat	1	Wrong location	1

MEDICAL RESPONSES

APPROXIMATELY 67% OF OUR CALLS ARE FOR MEDICAL ASSISTANCE. ALL EVANS FIREFIGHTERS ARE CERTIFIED AS EMERGENCY MEDICAL TECHNICIANS, HOWEVER, WE PARTNER WITH BANNER HEALTH FOR PARAMEDIC AND HOSPITAL TRANSPORT. CONTINUING MEDICAL EDUCATION IS AN IMPORTANT PART OF OUR TRAINING. EVANS FIREFIGHTERS TRAIN IN:

- AIRWAY MANAGEMENT
- SPINAL RESTRAINT PROTOCOL
- STROKE SCENARIOS
- CARDIAC EMERGENCIES
- TRAUMA – BURNS, SHOCK, HEAD INJURIES, HIP/PELVIC FRACTURES, SNAKE BITES
- ABDOMINAL EMERGENCIES
- ENVIRONMENTAL EMERGENCIES
- RESPIRATORY EMERGENCIES
- CHILD BIRTH
- HIPPA PROTOCOL
- LEGAL ASPECTS OF EMS



Complaint Reported by Dispatch	# of Incidents
Abdominal Pain	40
Allergies	6
Animal Bite	7
Assault	53
Back Pain	20
Breathing Problem	127
Burns	2
Cardiac Arrest	20
Chest Pain	75
Choking	2
CO Poisoning/Hazmat	2
Convulsions/Seizure	67
Diabetic Problem	29
Drowning	0
Eye Problem	0
Fall Victim	155
Headache	11
Heart Problems	11
Heat/Cold Exposure	5
Hemorrhage/Laceration	33
Industrial Accident	0
Ingestion/Poisoning	41
MCI (Mass Casualty Incident)	1
Not Applicable	110
Pregnancy/Childbirth	12
Psychiatric Problem	129
Sick Person	132
Stab/Gunshot Wound	4
Stroke/CVA	22
Traffic Accident	124
Transfer/Interfacility/Palliative Care	13
Traumatic Injury	39
Unconscious/Fainting	55
Unknown Problem Man Down	44

TRAINING

THROUGHOUT THE YEAR, EVANS FIREFIGHTERS TRAINED FOR A TOTAL OF 2,367 HOURS. TRAINING TOPICS RANGE FROM FIRE BEHAVIOR TO MEDICAL EDUCATION – SOME TRAINING SESSIONS ARE ACTIVE, HANDS-ON, WHILE OTHERS REQUIRE CLASSROOM TIME. IN ADDITION TO CONTINUING MEDICAL EDUCATION, EVANS FIREFIGHTERS TRAINED ON:

- AERIAL TRUCK OPERATIONS
- FIRE OFFICER CERTIFICATION
- VERTICAL VENTILATION
- HOSE DEPLOYMENT
- LADDER OPERATIONS
- ROPE RESCUE
- SWIFTWATER, ICE, AND DIVE RESCUES
- FORCIBLE ENTRY
- DRIVER/OPERATOR
- PUMP OPERATIONS, DRAFTING WATER
- BLUE CARD COMMAND CERTIFICATION
- IV CERTIFICATION
- VEHICLE EXTRICATION
- HAZARDOUS MATERIALS RESPONSE
- RAPID INTERVENTION TEAM (RIT)/MAYDAY TRAINING



EFPD CURRENTLY HAS 9 PERSONNEL THAT ARE CERTIFIED BY COLORADO STATE DIVISION OF FIRE PREVENTION & CONTROL AS FIRE OFFICER 1. DURING 2016 THIS CERTIFICATION WAS OBTAINED BY:

CAPTAIN BRIAN LEE

FIREFIGHTER TRAVIS GUTHRIE

FIREFIGHTER KENNY NAJERA

FIREFIGHTER SHAWN WALKER

MUTUAL AID

WE STRIVE TO MAINTAIN A STRONG PARTNERSHIP WITH OUR NEIGHBORING FIRE DISTRICTS. THROUGHOUT 2016 WE'VE FOCUSED ON WORKING CLOSELY WITH BOTH LASALLE AND PLATTE VALLEY FIRE PROTECTION DISTRICTS. AS THE NEED FOR OUR SERVICES INCREASES WE FIND IT NECESSARY TO RESPOND TOGETHER WITH OUR NEIGHBORS TO ENSURE THE SAFETY OF BOTH OUR CITIZENS AND OUR FIREFIGHTERS. IN 2016, THERE WERE 66% MORE CALLS THAT REQUIRED EVANS TO RECEIVE AID. HOWEVER, THERE WERE 20% FEWER CALLS THAT REQUIRED US TO GIVE AID.

2016	# of Incidents
Mutual aid given	21
Automatic aid given	23
Total Aid Given	45
Mutual aid received	31
Automatic aid received	47
Total Aid Received	78



