



# 2014 Annual Report



Evans Fire  
Protection District

# » Board of Directors

## A message from the Board President



Mary Achziger, President  
Seated on Board through 2018

As can be seen in this annual report, many opportunities have been presented to the Evans Fire Protection District. I am often amazed at what we have accomplished since the District's inception and what we continue to accomplish.

This Fire District formed on teamwork and continues to thrive with that teamwork. The City of Evans, the Board of Directors, and the Fire Chief could have never met our challenges without the most essential part of our team: our Members. It is our Members who identify the needs of the Department, prioritize those needs and do the real work to accomplish the tasks. Their commitment to having the best possible Fire Department is consistently evident. Our citizens are truly fortunate to have such quality personnel.



David James, Vice-President  
Seated on Board through 2016



Tricia Watson, Treasurer  
Seated on Board through 2016



Marty Schanwolf, Director  
Seated on Board through 2016



Steve Bernardo, Secretary  
Seated on Board through 2018

# » A Message from Chief Pristera

Greetings,

I am pleased to present the Evans Fire Protection District annual report- the first one completed during my tenure as Chief.

Though this report focuses on the achievements and performance of the fire district, I feel compelled to take a moment to express my gratitude and honor for being selected to lead this wonderful organization. Everyone associated with the fire district has welcomed me and my family with open arms and done everything imaginable to make both the personal and professional transition a smooth one.

In my three decades of public service, I have never met a more dedicated, respectful, compassionate group of people and it is my sincere honor to stand with them.

The central theme for 2014 was change.

Chief Warren Jones retired after eight years to the City of Evans and will always be remembered as one of the driving forces behind the formation of the District. In addition, Captain Brian Eckstine accepted a lateral transfer to another fire department and career FF Mike Brosig left to pursue other interests.

The process to replace Chief Jones was a thorough one, beginning with brainstorming sessions with the stakeholder groups and ending with a multi-day, joint interview process with the final candidates.

Concurrently, the assessment process needed to establish both captain and firefighter eligibility lists was completed. Though time consuming, the District was able to promote an internal candidate to Captain, and a part-time firefighter to full-time, with the confidence they were the best candidates available.

The condition of the response apparatus was one of the central themes in the formation of the District. A new quint was delivered in 2013 and in 2014 the apparatus committee turned their attention to replacing an engine. A Colorado Department of Local Affairs grant provided 40% funding and the District accepted delivery of a new engine in December.

In the interest of increasing staffing, and stopping the loss of quality firefighters, the part-time firefighter program was revised to reduce the time commitment required. This modification prompted the return of several firefighters who had departed because of their inability to meet the higher time commitment. Since they had previous experience with the District, the on-boarding process was more efficient in terms of time and expense. By the end of the year, the availability of two companies on duty had increased dramatically.

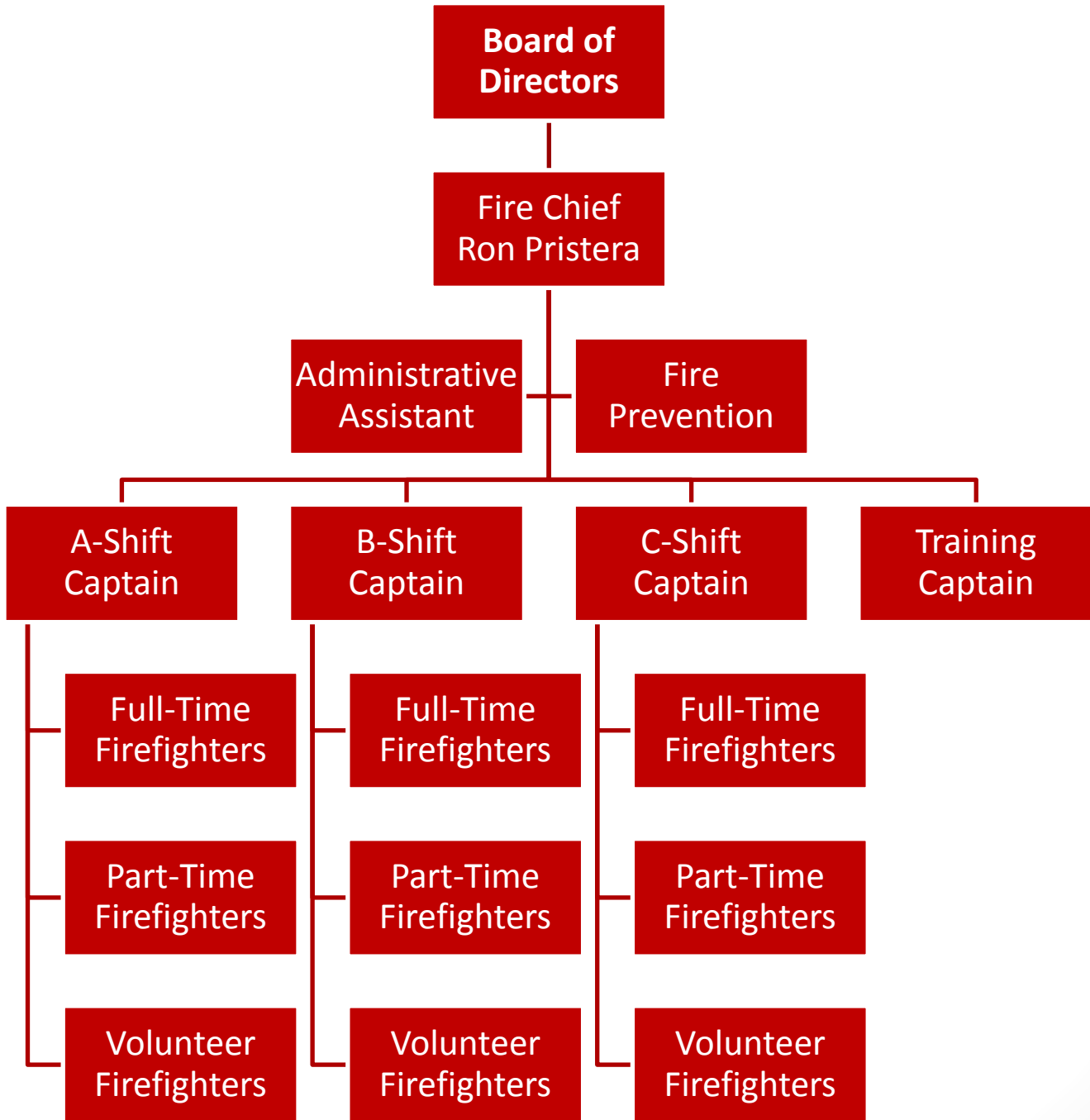
Detailed information concerning the District's performance is contained in the pages that follow. Please take a few minutes to review it. If you have any questions concerning the information contained in this report, or the District in general, we are happy to talk to you. Feel free to contact me directly.

Respectfully,



Ron Pristera, MPA, CFO

# » Organizational Chart



# »» The District & Community

- » The District serves approximately 19,000 citizens in Evans, Colorado in an area of 10 square miles. Located in the southern portion of the Greeley-Evans metro area (combined population of 120,000) the District is completely contained within the municipal limits of the City of Evans.
- » The District provides 24/7 fire and emergency services from one fully staffed fire station. Administrative offices are located in the Evans Community Complex, which also serves as the Evans City Hall. The District goal is to staff two engine companies with six on-duty firefighters 24/7. One of the on-duty engine companies cross-staffs a light EMS response vehicle. There are 12 full-time shift firefighters and company officers, 16 part-time and 5 volunteer firefighters. The administrative staff includes the Fire Chief, a Training Officer, and an Administrative Assistant.
- » In addition to fire protection for buildings and the people who live and work in them, the District provides first response emergency medical services at the basic life support level. Paramedic ambulance service is provided under contract by Banner Health/North Colorado Medical Center Paramedics in Greeley. The District provides the normal range of rescue, wildland fire, fire prevention, and training services common to suburban fire departments. We participate with other fire agencies in special operations teams. Our training center includes a two-story live fire building as well as propane, vehicle fire, and positive pressure attack props. Throughout 2014, the District transitioned to the Blue Card Hazard Zone Management System, as did most fire agencies in Weld and Larimer Counties. Dispatch and communications services are provided by the Weld County Communications Center which serves all of the fire, law enforcement, and ambulance agencies in the County.
- » The District participates in automatic-aid agreements with the new Front Range Fire Rescue and LaSalle FPD. We also participate in the Weld County master mutual-aid system, which includes the City of Greeley Fire Department. Between on-duty staffing and automatic and mutual-aid, the District is generally able to deploy 10-12 firefighters to structure fires within 10 minutes. The current ISO rating is 4. However, during the fall of 2014 District staff completed an ISO audit, with an updated rating expected in mid-2015.
- » Our apparatus fleet underwent some big changes throughout the past year. A 2014 Rosenbauer pumper was delivered in December 2014. This new pumper was designed to accompany the 2013 Rosenbauer 78' quint. With two new apparatus in service several older vehicles were sold as surplus items. The 1996 E-One Pumper was sold to Red Rocks Community College as a training apparatus. The rescue truck went to a small department in North Dakota and the 1986 Ford engine was bought by a private collector.



- » The District has a balanced operating budget with \$2,129,203 in revenue and \$2,089,714 in expenditures. The largest contributor to District revenue is Property Tax. The second largest revenue source is a contribution from the City of Evans in accordance with the Service Plan and Inter-Governmental Agreement authorized as part of the formation of the District. In 2014, this contribution was \$461,358. Through the Inter-Governmental Agreement, the City of Evans staff provided the administrative services of human resources, finance, benefits and risk management.

# » District Facilities

## Station 1

- » Evans Station 1 is located at 3918 Denver Street on the east side of Evans. This historic station was built by volunteer firefighters in 1975 with the support of Evans City Council, who purchased the materials. Currently, Station 1 is not staffed but serves as storage space for reserve equipment and contains an exercise facility for on-duty firefighters. During 2015 Chief Staff will be evaluating this facility for more efficient use.



## Station 2

- » Located at 2100 37th Street on the west side of town, Station 2 is our primary facility. Built in 1993, Station 2 was expanded to accommodate staffing increases in 2006. This fire station is staffed 24-hours a day, seven days a week by a combination of full-time, part-time, and volunteer firefighters.

## Administration Office

- » The Fire Chief, Training Officer, and administrative offices are located in the Evans Community Complex at 1100 37th Street. This location allows Chief staff to work closely with City of Evans Human Resources and Finance staff, who provide services through the Inter-Governmental Agreement.



## Training Facility

- » Located at the City of Evans maintenance facilities at 1958 40th Street are the District training facilities. This facility includes a two-story live fire building, as well as propane, vehicle fire, and positive pressure attack props. During 2014, an independent firm was consulted to evaluate the facility and complete necessary repairs and upgrades.

# » 2014 Highlights

## New Chief and Staffing

Throughout 2014 the District underwent many staffing changes. The biggest of these was the recruitment of a new Fire Chief. Early in the year Chief Warren Jones announced his plans to retire during the summer and staff began a thorough search process for his replacement. In late July 2014 the District was pleased to welcome Chief Ron Pristera to Evans. Chief Pristera came to us from the City of Ashtabula, OH Fire Department.



Chief Ron Pristera



Captain Brian Lee

In addition to a new Chief, the District also underwent a recruitment for Captain and Full-time Firefighters. The result of this process was the internal promotion of Firefighter Brian Lee. Captain Lee took command of B-Shift in September. During the year, three Part-time Firefighters were promoted to Full-time positions; Firefighters Cody Ganz, Ryan Nemmers, and Troy Brown were each assigned to a Full-time shift.

The Part-time Firefighter program was modified to retain skilled firefighters to address inconsistent staffing levels and high turn-over costs. This new program allowed Volunteer firefighters and former Evans firefighters to return to Evans as paid, part-time firefighters. This adjustment was implemented with little impact to the over-all personnel budget. A total of nine Volunteers took advantage of this opportunity. As a result, the District has been able to staff two companies on a consistent basis thereby increasing the availability of first responders to meet the needs of the citizens.

## New Apparatus

To continue the District goal of updating apparatus, staff oversaw the design and build of a 2014 Rosenbauer EXT Pumper. Fleet compatibility was focused on during the design phase to ensure the new pumper complimented the Rosenbauer Quint that was delivered in 2013.



## Live Fire Training Facility Updates

Following a professional evaluation of our training facilities in Fall 2013, several areas of improvement were noted in our live fire building. These upgrades and improvements were completed throughout 2014. In addition to general maintenance items, a railing was added to the roof to create a safe environment for roof ventilation training.

# » 2014: Year at a Glance

INCIDENT COUNT	
INCIDENT TYPE	# INCIDENTS
EMS	1232
FIRE	587
<b>TOTAL</b>	<b>1819</b>

PRE-INCIDENT VALUE	LOSSES
<b>\$11,365,662.00</b>	<b>\$203,830.00</b>

CO CHECKS	
424 - Carbon monoxide incident	5
736 - CO detector activation due to malfunction	19
746 - Carbon monoxide detector activation, no CO	3
<b>TOTAL</b>	<b>27</b>

MUTUAL AID	
Aid Type	Total
Aid Given	44
Aid Received	58

OVERLAPPING CALLS	
# OVERLAPPING	% OVERLAPPING
<b>333</b>	<b>18.31</b>

LIGHTS AND SIREN - AVERAGE RESPONSE TIME (Dispatch to Arrival)	
EMS	FIRE
0:05:40	0:08:07
<b>AVERAGE FOR ALL CALLS</b>	<b>0:06:22</b>

LIGHTS AND SIREN - AVERAGE TURNOUT TIME (Dispatch to Enroute)	
EMS	FIRE
0:01:42	0:02:43
<b>AVERAGE FOR ALL CALLS</b>	<b>0:02:00</b>

<b>AVERAGE TIME ON SCENE</b>	<b>22:17</b>
------------------------------	--------------





# » Emergency Response

INCIDENT BY PRIMARY ACTION TAKEN	2013		2014		% CHANGE
	# OF INCIDENTS	% OF TOTAL	# OF INCIDENTS	% OF TOTAL	
Fire	53	3.0%	50	2.7%	-6.0%
Provide First Aid or Basic Life Support	557	31.4%	622	34.2%	10.5%
Assist Disabled/Elderly	41	2.3%	50	2.7%	18.0%
Hazardous Spill/Leak/Materials/Condition	20	1.1%	26	1.4%	23.1%
Provide Manpower/Apparatus/Equipment	572	32.3%	592	32.5%	3.4%
Investigate	255	14.4%	208	11.4%	-22.6%
Canceled en route	183	10.3%	192	10.6%	4.7%
Stand-by	18	1.0%	26	1.4%	30.8%
Other Calls	74	4.2%	53	2.9%	-39.6%
<b>TOTALS</b>	<b>1773</b>		<b>1819</b>		<b>2.5%</b>

- » In 2014 Evans Fire District responded to 1,819 calls for service, dispatched through the Weld County Regional Communications Center. This was an increase of 2.5% over responses in 2013. The majority of all calls for service were related to medical emergencies. The largest increases within a single category were for stand-by and hazardous conditions. Stand-by calls involve an incident where the police are securing a scene prior to the fire department's arrival. The Hazardous Conditions category includes all calls to identify or analyze hazardous materials, control spills or leaks, remove hazards or hazardous materials.
- » The updated automatic aid agreement with LaSalle Fire District was fully implemented for all of 2014. This agreement led to an increase in the amount of incidents requiring EFPD to both give and receive aid. However, this also resulted in a stronger response to all structure fires in both districts. We also increased the aid provided to Platte Valley Fire District in Kersey.



AID TYPE	2013		2014		% CHANGE
	# OF INCIDENTS	% OF TOTAL	# OF INCIDENTS	% OF TOTAL	
Mutual aid received	34	1.9%	24	1.3%	-41.7%
Automatic aid received	18	1.0%	34	1.9%	47.1%
<b>TOTAL AID RECEIVED</b>	<b>52</b>	<b>2.9%</b>	<b>58</b>	<b>3.2%</b>	<b>10.3%</b>
Mutual aid given	20	1.1%	33	1.8%	39.4%
Automatic aid given	19	1.1%	11	0.6%	-72.7%
<b>TOTAL AID GIVEN</b>	<b>39</b>	<b>2.2%</b>	<b>44</b>	<b>2.4%</b>	<b>11.4%</b>
No aid needed	1682	94.9%	1717	94.4%	2.0%

# » Medical Incidents

MEDICAL INCIDENTS	2013		2014		% CHANGE
	# OF INCIDENTS	% OF TOTAL	# OF INCIDENTS	% OF TOTAL	
311 - Medical assist, assist EMS crew	646	53.4%	663	53.8%	2.6%
320 - Emergency medical service, other	1	0.1%		0.0%	
321 - EMS call, excluding vehicle accident with injury	425	35.1%	437	35.5%	2.7%
322 - Motor vehicle accident with injuries	41	3.4%	49	4.0%	16.3%
323 - Motor vehicle/pedestrian accident	9	0.7%	7	0.6%	-28.6%
324 - Motor vehicle accident with no injuries	72	6.0%	72	5.8%	0.0%
350 - Extrication, rescue, other	2	0.2%		0.0%	
351 - Extrication of victim(s) from building/structure	1	0.1%		0.0%	
352 - Extrication of victim(s) from vehicle		0.0%	1	0.1%	100%
357 - Extrication of victim(s) from machinery		0.0%	1	0.1%	100%
363 - Swift water rescue	9	0.7%		0.0%	
381 - Rescue or EMS standby	4	0.3%	2	0.2%	-100%
<b>Totals</b>	<b>1210</b>		<b>1232</b>		<b>1.8%</b>

- » The majority of EFPD calls for service are for medical services—EMS calls account for about 60% of our total call volume. EFPD responds with Banner Health Ambulance Services to all medical emergencies in accordance with Weld County EMS dispatch procedures common across the entire county.



